



**ENERGETIC**  
LIGHTING

Project:		Catalog #:		Type:	
----------	--	------------	--	-------	--

Prepared by:		Notes:		Date:	
--------------	--	--------	--	-------	--

## E1WPM

LED Mini Wall Pack Fixture  
CCT&Wattage Select • 10-yr Warranty



## OVERVIEW

Energetic Lighting's E1WPM series is the creative contemporary redesign of the wall mounted security light. Ideal for use where LED commercial wall pack fixtures provide a quick and easy solution for multi-family, residential, and apartment applications. Energetic Lighting's ezCCT and ezWatt features allow for field-selection of CCT (3000K, 4000K, or 5000K), and wattage (15W or 10W), both accessible during installation by removing the diffuser cover.

Designed to replace traditional 100W equivalent incandescent wall pack fixtures and with a light output of >90 CRI to help better match full-spectrum lights being replaced. An integrated dusk-to-dawn photocell sensor automatically turns the fixture on/off relative to ambient light for further energy savings without the need for external sensors and regulators. Designed with a minimum L70 lifetime of 50,000 hours and backed by our 10 year warranty, this fixture will provide many years of maintenance-free use.

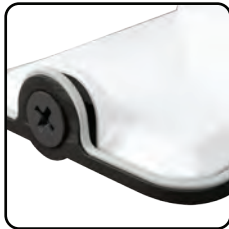
## KEY FEATURES

- EZCCT field-selectable CCT - 3000K, 4000K & 5000K @ >90 CRI
- EZWATT field-selectable Wattage - 2 steps: 15W or 10W reduced light output
- Standard mounting slots for wall junction box patterns
- Suitable for wet location installations
- Standard 1/2" trade size conduit twist-out port provided at bottom of fixture body for alternative wiring options
- Integrated dusk-to-dawn photocell sensor
- High color rendition CRI >90
- Dimmable down to 10% with standard triac wall switch dimmers
- Minimum 88% lumen maintenance @ 50,000 hours - L88/50,000 (per IES TM21)
- Minimum projected L70 @ 142,000 hours = maintenance free illumination (per IES TM21)

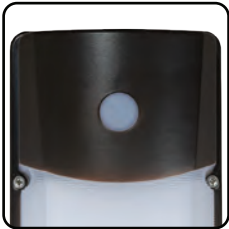
## Highlights



Field-selectable CCT and Wattage control provides flexibility to installation and stocking



Fully sealed seams for wet location and prevents insect ingress



Integrated dusk-to-dawn photocell sensor for self-regulated daylight control



Bottom location 1/2" standard trade-size conduit twist-out access



Standard JBox mounting pattern on backplate



Included hardware pack with patterned foam gasket for easy JBox weather sealing

## Load Information

Input Voltage	120Vac
Power Factor	0.9
THD	<20%
Low Temp Start	-40°C (-40°F)
Max Temp	40°C (104°F)
Unit Weight	2.0 lbs

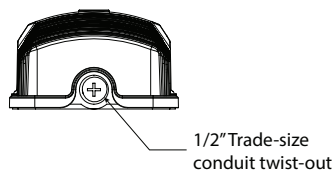
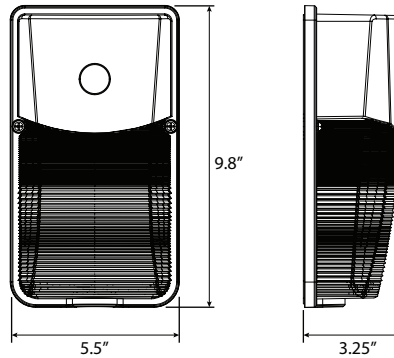
## Shipping Information

Item	Weight	Box Qty.
Package	2.5 lbs	1 per pack
Case	23 lbs	10 per case

## Lumen Maintenance

Ambient Temp	TM-21 Lumen Maint. (50,000 hours)	Theoretical L70 (hours)
25°C	>88%	142,000

## Dimensions



1/2" Trade-size conduit twist-out

