



wireless electricity monitor

new



visual
alarm



wireless
transmitter



advanced
sensor



heavy duty
140 amp sensor



Wireless electricity monitor displaying instant power, costs and estimated CO2 emissions. It can also show historical and average data.

- Take control of your energy use
- Monitor the cost of using your home appliances and lights
- Discover and reduce the size of your carbon footprint
- Fun and educational for the whole family

efficient energy through technology...

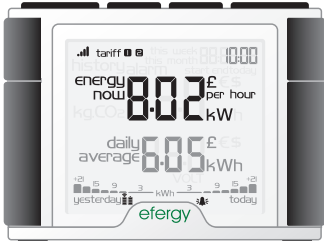
efergy



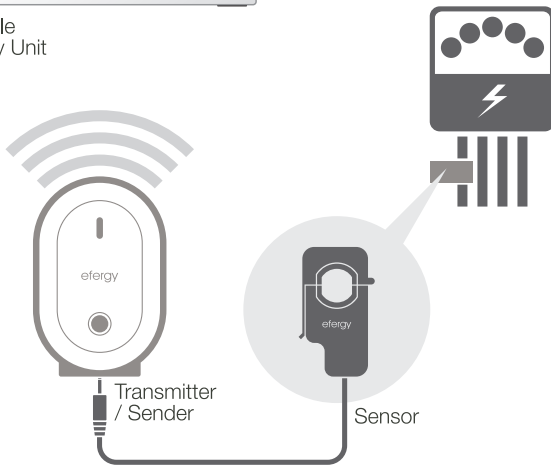
wireless electricity monitor

Save up to 20% off your electricity bill through greater awareness!

HOW IT WORKS



Portable Display Unit



INSTANT MODE

Transmission signal

Instant Information

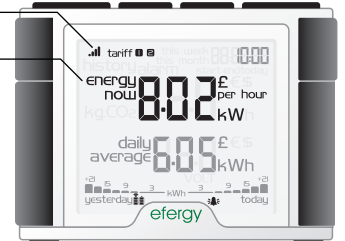
Push the **Mode Button** to change information being displayed from kWh to costs per hour

Battery warnings:

Transmitter

Display

Alarm on



HISTORY MODE

Days, weeks, months

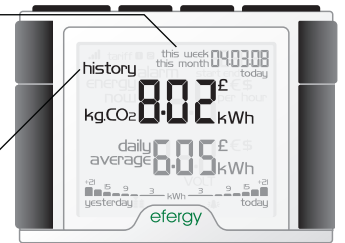
Push the history button to move from daily to weekly to monthly information

Use the **BWD** and **FWD** buttons to scroll between dates and compare consumption data

History

Push the **History Button** to access daily, weekly and monthly stored data

Push the **Mode Button** to change information display from kWh to costs and CO2 emissions



Compatible

Suitable for use with clip-on sensor or consumer unit transmitter.

Easy to Install

Designed to be installed either by consumer or professional.

Flexible

Valid for single & dual tariff.

Easy to Understand

Clear and simple graphical display.

Simultaneous Information

Average daily (energy & costs), instant Information (power & costs), historical consumption (energy, costs and CO₂).

History

Stores data for 7 days, 4 weeks & 24 months.

Discover

- How much electricity is being used at any given moment
- The total amount of money being spent on electricity
- The difference in electricity consumption by turning on and off various appliances
- How much money can be saved by reducing usage

Understand

- Daily average consumption
- Savings of 5%-20% off typical energy consumption
- Consumption history
- Carbon Footprint

Specifications

Model Name:	efergy elite
Frequency:	433.52MHz
Transmission Time:	6s, 12s. or 18s.
Transmission Range:	40m-70m
Sensor Voltage Range	110V-300V
Measuring Current:	50mA - 95A
Accuracy:	<8%
Memory:	64K

efergy.com

