



wireless electricity monitor

new



USB to PC
connection



wireless
transmitter



advanced
sensor



heavy duty
sensor

Wireless electricity monitor displaying instant power, costs and estimated CO2 emissions. It can also show historical and average data.

- Take control of your energy use
- Monitor the cost of using your home appliances and lights
- Discover and reduce the size of your carbon footprint
- Fun and educational for the whole family

efficient energy through technology...

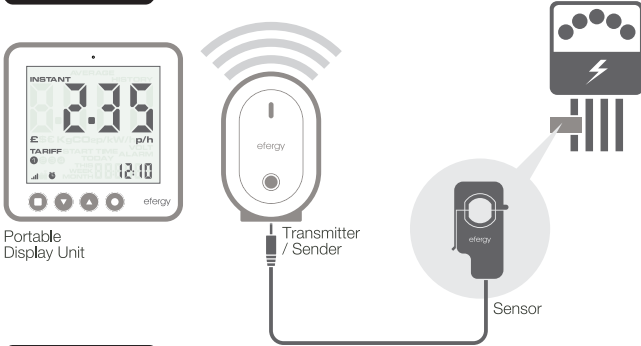
efergy



wireless electricity monitor

Save up to 20% off your electricity bill through greater awareness!

HOW IT WORKS



AVERAGE MODE

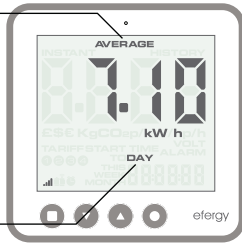
Average Information

Push the top button to access Average mode.

Push the ● button to change information being displayed from kW to costs per hour and to kilograms of CO₂ per hour.

Days, Weeks, Months

Push the ■ button to move from daily to weekly to monthly average information.



INSTANT MODE

Instant Information

Push the ● button to change information being displayed from kW to costs per hour and to kilograms of CO₂ per hour.

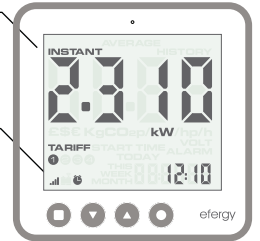
Transmission signal

Battery warnings:

■ Transmitter

■ Display

Alarm on 🔔



HISTORY MODE

History

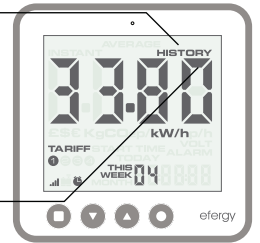
Push the Top Button to access History Mode.

Push the ● to change the information being displayed from kW to costs per hour and to kilograms of CO₂ per hour

Days, weeks, months

Push the ■ button to move from daily to weekly to monthly information

Use the Arrow buttons to scroll between dates and compare consumption data



Compatible

Suitable for use with clip-on sensor or consumer unit transmitter.

Easy to Install

Designed to be installed either by consumer or professional.

Flexible

Multiple tariff settings.

Easy to Understand

Clear and simple graphical display.

Simultaneous Information

Average daily (energy and costs), instant Information (power and costs), historical consumption (energy, costs and CO₂ emissions).

Discover

- How much electricity is being used at any given moment
- The total amount of money being spent on electricity
- The difference in electricity consumption by turning on and off various appliances
- How much money can be saved by reducing usage

Understand

- Daily average consumption
- Savings of 5%-20% off typical energy consumption
- Consumption history
- Carbon Footprint

Specifications

Model Name:	efergy e2
Frequency:	433.52MHz
Transmission Time:	6s. 12s. or 18s.
Transmission Range:	40m-70m
Sensor Voltage Range	110V-300V
Measuring Current:	50mA - 95A
Accuracy:	<8%
Memory:	64K
Power:	3xAAA Batteries

efergy.com



efficient energy through technology...

